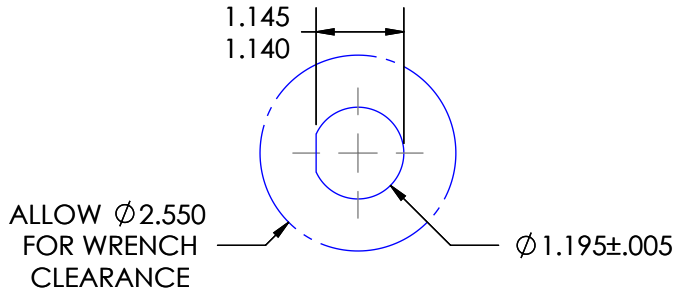
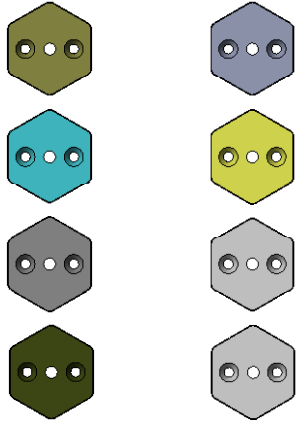


RECOMMENDED PANEL CUTOUT  
FOR FRONT MOUNT & REAR MOUNT SPLIT NUT  
VIEW FROM FRONT OF PANEL



BASE MATERIAL  
& PLATING OPTIONS

- ALUMINUM - CAD PLATE OLIVE DRAB
- ALUMINUM - STEEL GRAY HARD ANODIZE
- ALUMINUM - ELECTROLESS NICKEL - ZINC FINISH (MILITARY)
- BRONZE - NO PLATING
- ALUMINUM - BLACK HARD ANODIZE W/TEFLON  
IMPREGNATION (COMMERCIAL)
- 303 STAINLESS STEEL - PASSIVATED
- ALUMINUM - GREEN HARD ANODIZE W/ TEFLON  
IMPREGNATION (COMMERCIAL)
- 316L STAINLESS STEEL - PASSIVATED



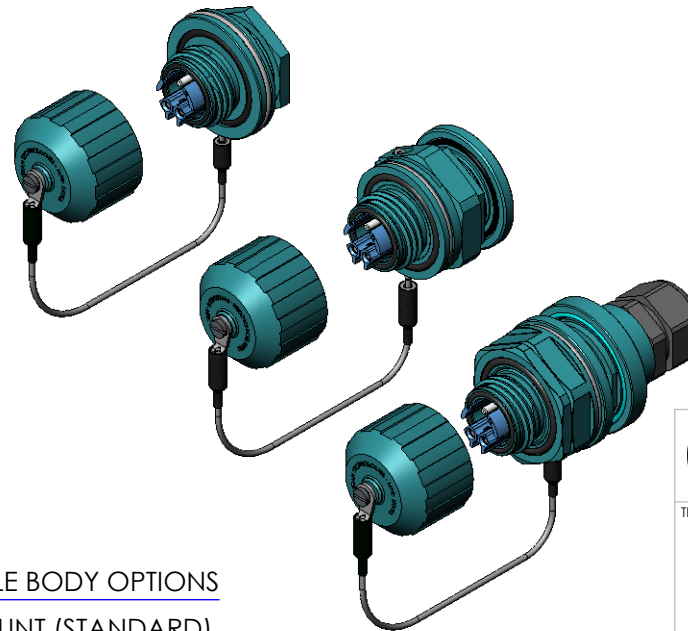
TERMINI OPTIONS

- NONE
- 4 TERMINI (STANDARD)
- 2 TERMINI / 2 DUMMY



INSERT KEY CONFIGURATION  
& COLOR OPTIONS

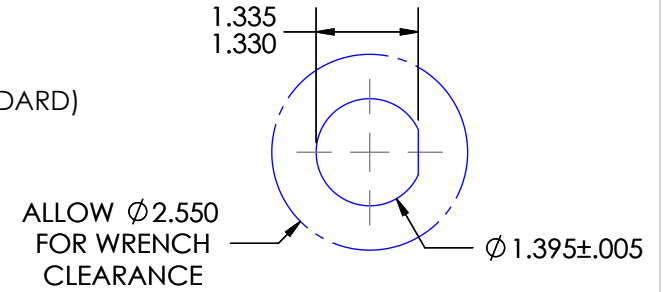
- KEY 1 - MULTIMODE - BLUE/GRAY (STANDARD)
- KEY 2 - MULTIMODE - BLUE/GRAY
- KEY 3 - MULTIMODE - BLUE/GRAY
- KEY 4 - MULTIMODE - BLUE/ GRAY
- KEY 1 - MQJ - GOLD
- KEY 2 - MQJ - GOLD
- KEY 3 - MQJ - GOLD
- KEY 4 - MQJ - GOLD
- KEY 1 - SINGLEMODE - BLUE
- KEY 2 - SINGLEMODE - BLUE
- KEY 3 - SINGLEMODE - BLUE
- KEY 4 - SINGLEMODE - BLUE
- KEY 1 - APC - GREEN
- KEY 2 - APC - GREEN
- KEY 3 - APC - GREEN
- KEY 4 - APC - GREEN
- KEY 1 - SECURE - RED
- KEY 2 - SECURE - RED
- KEY 3 - SECURE - RED
- KEY 4 - SECURE - RED



RECEPTACLE BODY OPTIONS

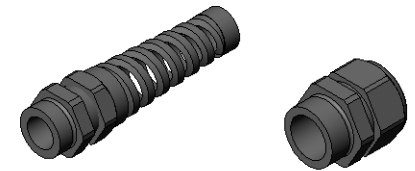
- FRONT MOUNT (STANDARD)
- REAR MOUNT SPLIT NUT
- REAR MOUNT PANELMASTER

RECOMMENDED PANEL CUTOUT  
FOR PANELMASTER ONLY  
VIEW FROM FRONT OF PANEL



STRAIN RELIEF OPTIONS

- NONE (STANDARD)
- SPIRAL FOR .20"-.35" OD CABLE
- SPIRAL FOR .27"-.47" OD CABLE
- SPIRAL FOR .39"-.55" OD CABLE
- DOMED FOR .20"-.35" OD CABLE
- DOMED FOR .27"-.47" OD CABLE
- DOMED FOR .39"-.55" OD CABLE



PANEL SEAL OPTIONS

- VITON (COMMERCIAL)
- EPDM NBC (MILITARY)
- EPDM CONDUCTIVE NBC/EMI  
(MILITARY)



# CORNING

TITLE:

4 CH. TFOCA  
GenX JAMNUT  
RECEPT.

39 GREAT HILL RD  
NAUGATUCK, CT 06770  
(203) 729-2572

LAST UPDATE:

10-01-13