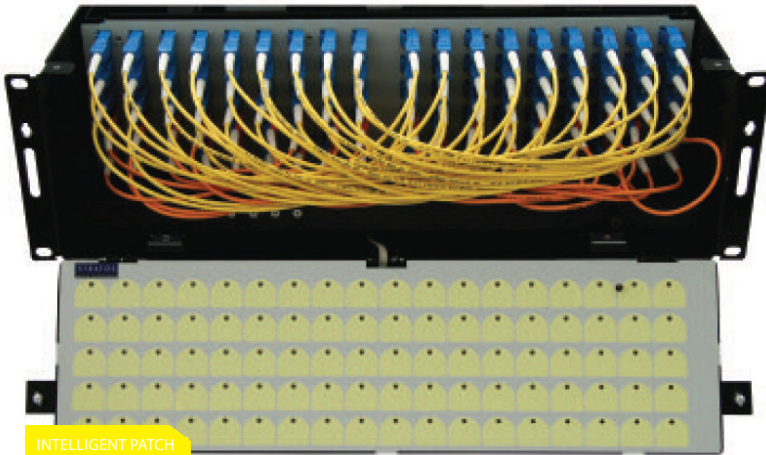


RFID Intelligent Patch Panels



INTELLIGENT PATCH PANEL

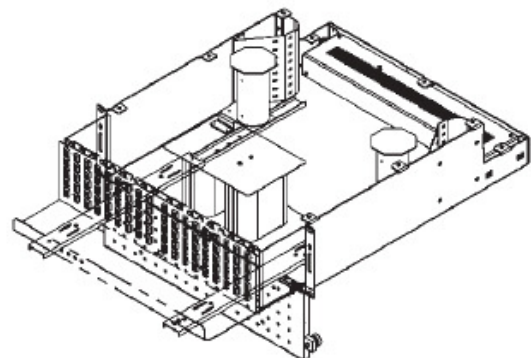
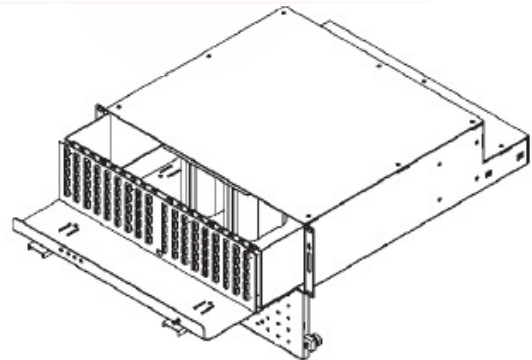
Intelligent Patch Panels

STRAN Technologies' RFID-ready connectors and patch panels offer a cost-effective solution to real-time mapping and self-organizing management for both fiber and copper networks. Eliminating the need for paper based records, the system ensures data integrity through remote monitoring capability. The STRAN system is simple to install and requires minimum maintenance.

Each RFID equipped connector can store information about that connector, as well as the cable assembly it is part of. This provides complete pairing information of connectors on cable assemblies, enabling systems engineers to diagnose potential faults quickly and if necessary take immediate action to re-route traffic via the most efficient channels.

The cable infrastructure routing is constantly monitored in real time, with information automatically relayed from the individual nodes to a visually intuitive mapping and management software frontend.

- Real-Time Mapping
- No Paper
- Integrity of Data
- Automated Mapping
- IP Addressable
- Minimises Downtime
- Prevents Overstretch
- Minimize Loss of Data



Front of casing showing slide out drawer and hinged fascia with labels and LED status indicators.

MILITARY TACTICAL

MILITARY SHIPBOARD

ENERGY

MINING

AEROSPACE

COMMERCIAL

RFID Intelligent Patch Panels



MILITARY TACTICAL

MILITARY SHIPBOARD

ENERGY

MINING

AEROSPACE

COMMERCIAL

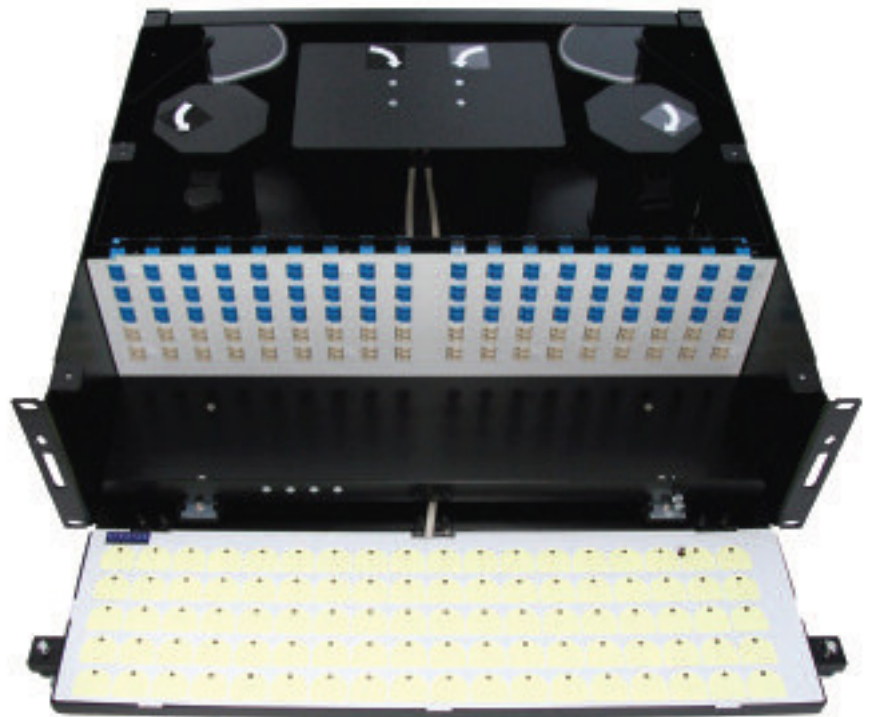
Rear view, with lid removed to show cable management & entry points. PowerBrick is mounted in the lower section with all connections to the rear.



PowerBrick outside the panel showing all-enclosed-packing with connections on the rear. This unit can be mounted separately in 1RU space if needed.



Front view of the panel, with lid removed for clarity. Drawer in closed position and Door with LED Panel opened.
Top 3-rows (blue) - SM
Bottom 2-rows (beige) - MM



Specification Features

Optical Channels:	180 LC Channels - total count
Management:	Web-based management interface, firmware uploads via LAN-based utility
Dimensions:	Chassis:133mm (H) x 444.5mm (W) x 500 (D) Height: 3RU, rack mounting kit included
Construction:	19" Rack Mount for Building or Vehical Installation
Weight:	12kg / 25lbs
Materials:	Powder Coated Mild Steel
Environmental:	Operating Temperature: 0°C to 45°C (32°F to 113°F), 10% to 90% RH Storage Temperature: -20°C to 70°C (-4°F to 158°F) , 10% to 95% RH
Power:	Maximum Power Consumption: 1.0A @ 85VAC - 264VAC, 47Hz - 63Hz Power Outputs: 6x 12VDC @ 250mA (nominal) [330mA (max)]